

PNEUMATIC BELT SANDER

BELTON

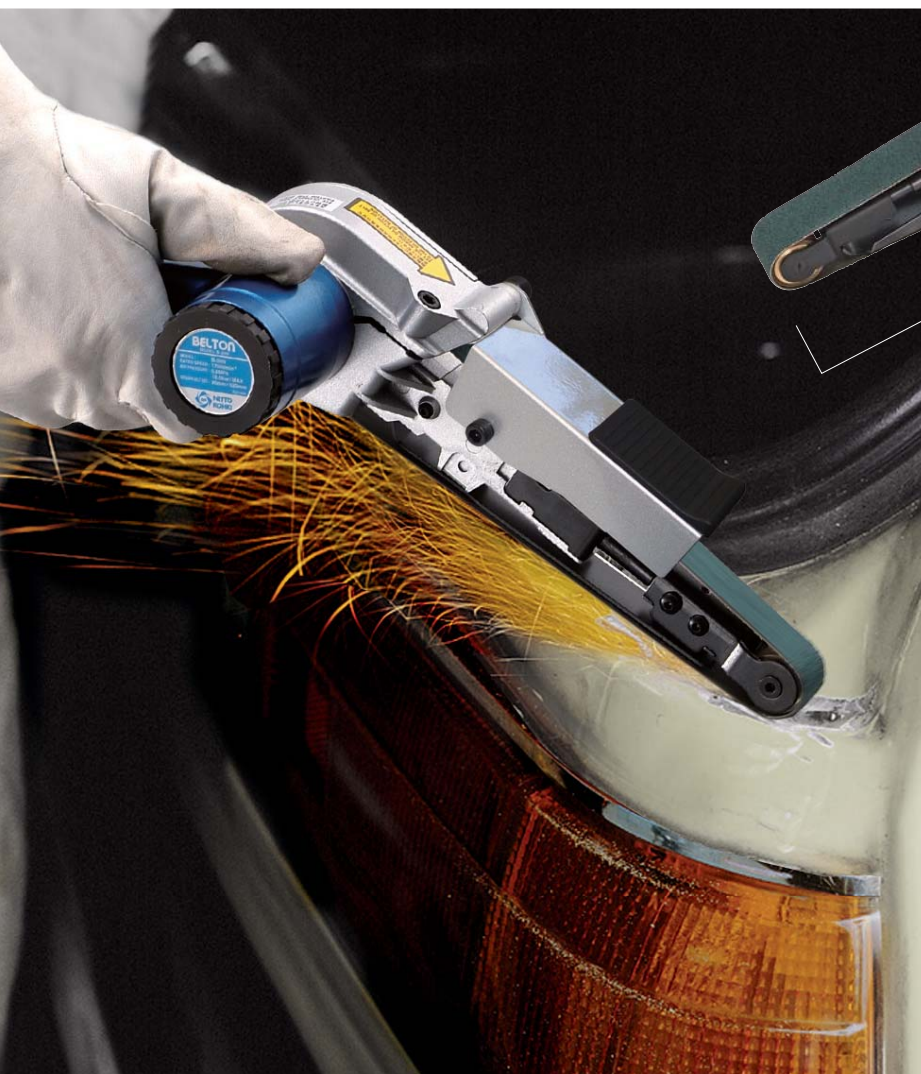
Rear exhaust system

Model **B-10N**, **B-20N**, and **B-30N**

Redesigned for operators convenience with improved sanding and polishing efficiency.

Rubber grips prevent cold hands.

The most versatile belt sander ever developed for trimming, chamfering, bead grinding, and finish sanding.

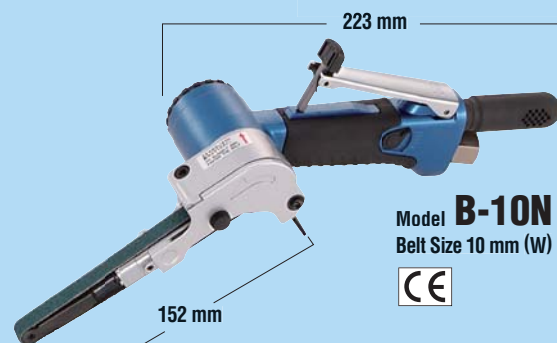


ISO 14001
JQA-EM4057
NITTO KOHKI Co., LTD.
Headquarters
Research Center

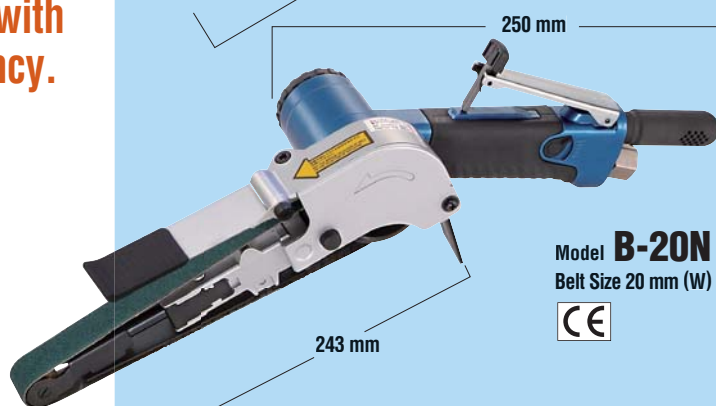


ISO 9001
JQA-2042
NITTO KOHKI Co., LTD.
Machine Tools Division

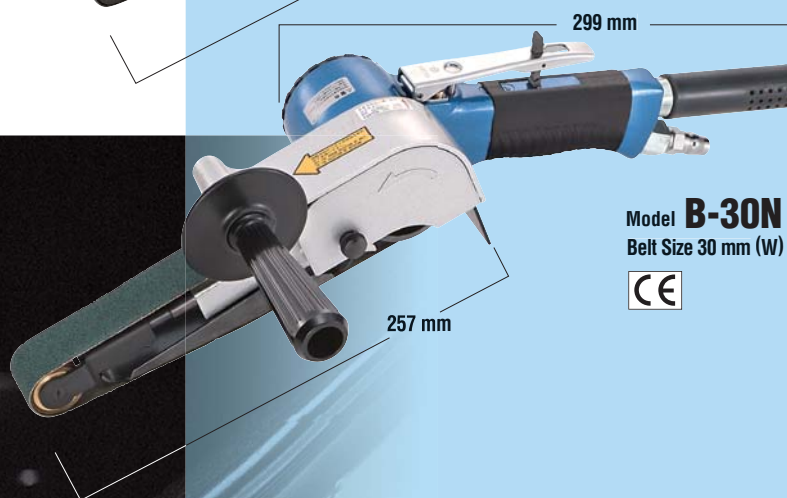
Cat.No. Tk110

NEW

Model **B-10N**
Belt Size 10 mm (W)



Model **B-20N**
Belt Size 20 mm (W)



Model **B-30N**
Belt Size 30 mm (W)



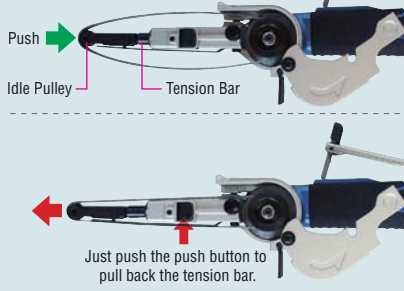
Suitable for sanding jobs in narrow spaces, recessed corners or on curved surfaces.

Belt change is quick and easy!

Belt change can be made easily by pushing the idle pulley against the housing to lock the tension bar.

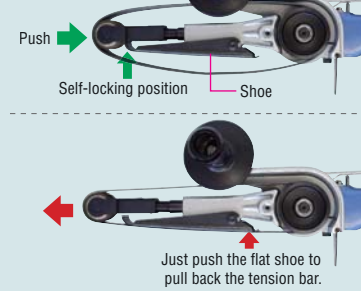
For B-10N & B-20N

Push the idle pulley into self-locking position to loosen the belt.



For B-30N

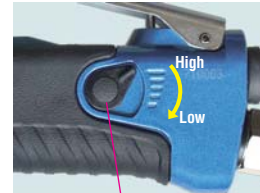
Push the idle pulley into self-locking position to loosen the belt.



Belt speed adjustment

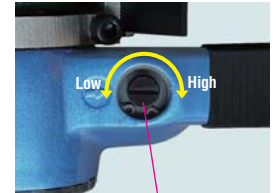
Belt speed can be easily adjusted by turning the adjust lever or adjust valve without a tool.

For B-10N & B-20N



Adjust Lever

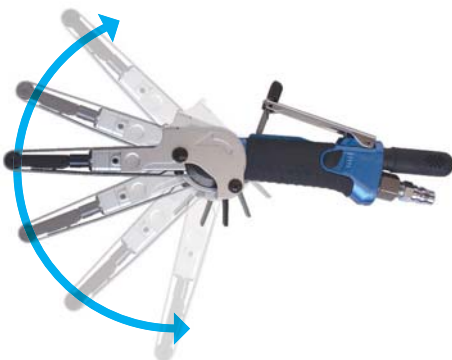
For B-30N



Adjust Valve

Guard position is adjustable

Guard angle can be changed freely in accordance with the working position and shape of the workpiece.



Specifications

Model	B-10N	B-20N	B-30N	
Rated Air Pressure	MPa {kgf/cm ² }	0.6 {6}	0.6 {6}	0.6 {6}
Air Consumption (No load)	m ³ /min	0.4	0.52	0.68
Motor Free Speed	min ⁻¹ (rpm)	17,000	17,000	14,000
Belt Speed	m/min	1,120	2,620	2,160
Belt Size	mm	10 x 330	20 x 520	30 x 540
Hose Size	inch	1/4	1/4	1/4
Mass (Weight)	kg	0.7	1.2	2.2
Standard Accessories	<ul style="list-style-type: none"> •Abrasive Belt Z#60 x 10 mm: 2pcs. (1pc. on the body) •Abrasive Belt Z#80 x 10 mm: 1pc. •Abrasive Belt Z#100 x 10 mm: 1pc. •Abrasive Belt Z#120 x 10 mm: 1pc. •2mm Hex. Wrench Key: 1pc. •4mm Hex. Wrench Key: 1pc. •Bushing PT1/4 x NPT 1/4: 1pc. 			
	<ul style="list-style-type: none"> •Abrasive Belt Z#60 x 20 mm: 2pcs. (1pc. on the body) •Abrasive Belt Z#80 x 20 mm: 1pc. •Abrasive Belt Z#100 x 20 mm: 1pc. •Abrasive Belt Z#120 x 20 mm: 1pc. •2.5mm Hex. Wrench Key: 1pc. •4mm Hex. Wrench Key: 1pc. •5mm Hex. Wrench Key: 1pc. •Bushing PT1/4 x NPT 1/4: 1pc. •Convex Shoe: 1pc. •Finger Pad Ass'y: 1pc. 			
	<ul style="list-style-type: none"> •Abrasive Belt Z#60 x 30 mm: 2pcs. (1pc. on the body) •Abrasive Belt Z#80 x 30 mm: 1pc. •Abrasive Belt Z#100 x 30 mm: 1pc. •4mm Hex. Wrench Key: 1pc. •5mm Hex. Wrench Key: 1pc. •Bushing PT1/4 x NPT 1/4: 1pc. 			

Optional Parts

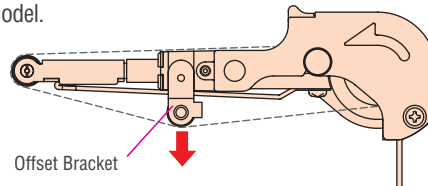
Optional Offset Bracket Ass'y for B-10N, B-20N, and B-30N

An optional offset bracket ass'y is available for individual model.

Abrasive Belt

Abrasive Belt and Optional Parts for B-10N

PN	Part Name	Q'ty
TB07283	Bracket 6 Ass'y (for 6mm belt)	1 set
TQ10942	Shoe 6 (for 6mm belt)	1 pc.
TB00241	Abrasive Belt Z#60 x 6 mm	50 pcs.
TB00242	Abrasive Belt Z#80 x 6 mm	50 pcs.
TB00243	Abrasive Belt Z#100 x 6 mm	50 pcs.
TB00244	Abrasive Belt Z#120 x 6 mm	50 pcs.
TB00245	Abrasive Belt Z#180 x 6 mm	50 pcs.
TB00246	Abrasive Belt Z#240 x 6 mm	50 pcs.
TA9A237	Abrasive Belt AA#400 x 6 mm	50 pcs.
TA9A064	Abrasive Belt Z#60 x 10 mm	50 pcs.
TB00076	Abrasive Belt Z#80 x 10 mm	50 pcs.
TB00077	Abrasive Belt Z#100 x 10 mm	50 pcs.
TB00247	Abrasive Belt Z#120 x 10 mm	50 pcs.
TB00248	Abrasive Belt Z#180 x 10 mm	50 pcs.
TB00249	Abrasive Belt Z#240 x 10 mm	50 pcs.
TA9A244	Abrasive Belt AA#400 x 10 mm	50 pcs.



Offset Bracket

*Curved surface sanding is possible by using the offset bracket.

Abrasive Belt for B-20N

PN	Part Name	Q'ty
TA99605	Abrasive Belt Z#40 x 20 mm	20 pcs.
TA99606	Abrasive Belt Z#60 x 20 mm	20 pcs.
TA99607	Abrasive Belt Z#80 x 20 mm	20 pcs.
TA99608	Abrasive Belt Z#100 x 20 mm	20 pcs.
TA99609	Abrasive Belt Z#120 x 20 mm	20 pcs.
TB00250	Abrasive Belt Z#180 x 20 mm	20 pcs.
TB00251	Abrasive Belt Z#240 x 20 mm	20 pcs.
TA9A252	Abrasive Belt AA#280 x 20 mm	20 pcs.
TA9A253	Abrasive Belt AA#320 x 20 mm	20 pcs.
TA9A254	Abrasive Belt AA#400 x 20 mm	20 pcs.

Abrasive Belt for B-30N

PN	Part Name	Q'ty
TB00252	Abrasive Belt Z#40 x 30 mm	20 pcs.
TB00253	Abrasive Belt Z#60 x 30 mm	20 pcs.
TB00254	Abrasive Belt Z#80 x 30 mm	20 pcs.
TB00255	Abrasive Belt Z#100 x 30 mm	20 pcs.
TB00256	Abrasive Belt Z#120 x 30 mm	20 pcs.
TB00257	Abrasive Belt Z#180 x 30 mm	20 pcs.
TB00258	Abrasive Belt Z#240 x 30 mm	20 pcs.
TA9A262	Abrasive Belt AA#280 x 30 mm	20 pcs.
TA9A263	Abrasive Belt AA#320 x 30 mm	20 pcs.
TA9A264	Abrasive Belt AA#400 x 30 mm	20 pcs.

★ Specifications and designs are subject to change at any time without notice.



Head Office
9-4, Nakaikegami 2-chome,
Ohta-ku, Tokyo 146-8555 Japan
Phone : +81-3-3755-1111 Fax : +81-3-3753-8791

- ▶ E-mail : overseas@nitto-kohki.co.jp
- ▶ URL : www.nitto-kohki.co.jp/e

DISTRIBUTED BY